

TTA Fixation Failure in a Labrador Retriever

Robert Botte, DVM, Diplomate ACVS
Veterinary Surgical Service, San Diego

Signalment: 80 lb, 4 year old labrador retriever

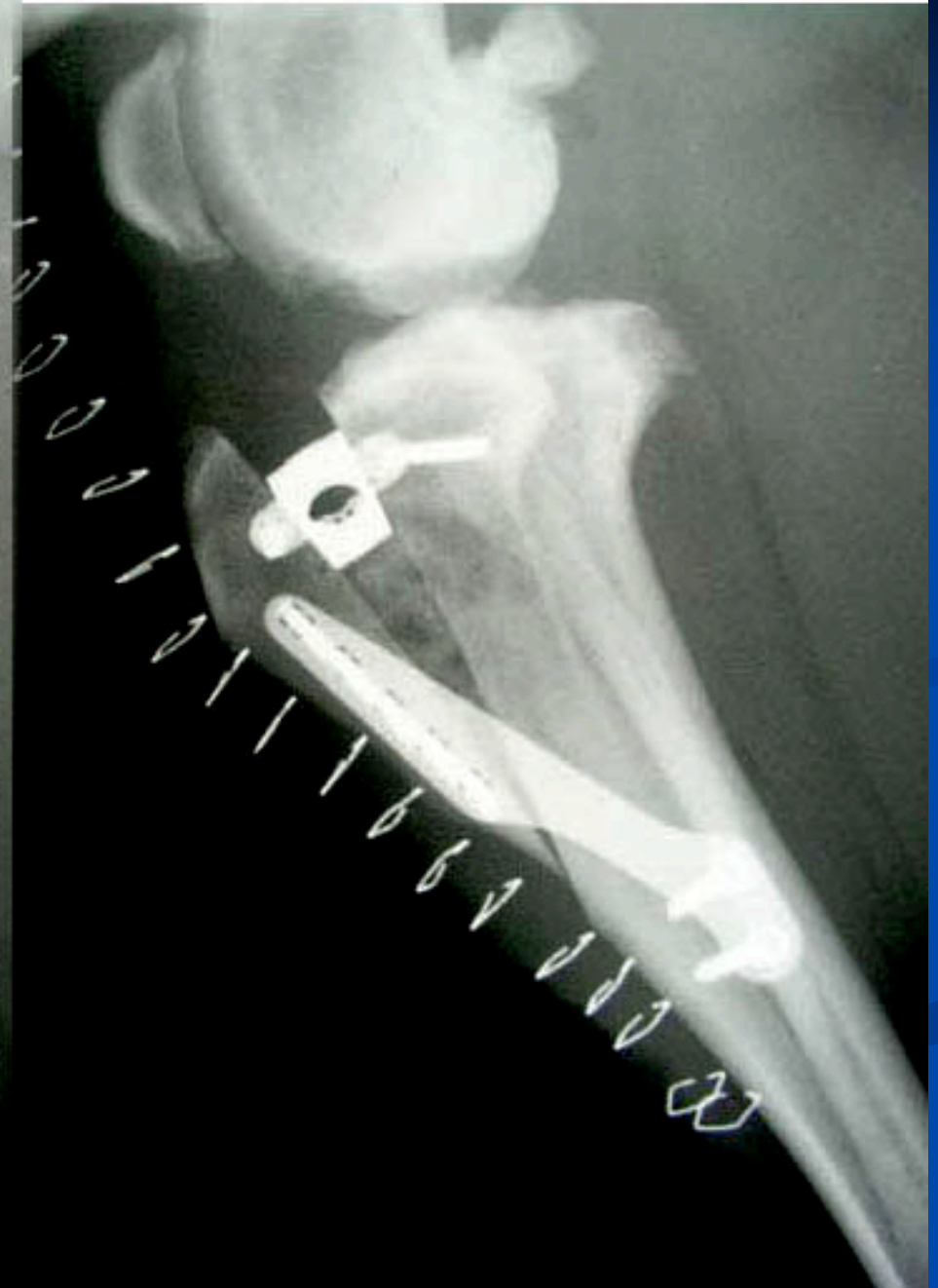
History: Right intracapsular CCL repair 9/22/03.
Recent onset left hind limb lameness.

Physical exam: bilateral stifle swelling, mild left cranial drawer motion. Stifle range of motion restricted to 90 degrees bilaterally.

Surgery: Left TTA 2/22/07

Pre op

Post op



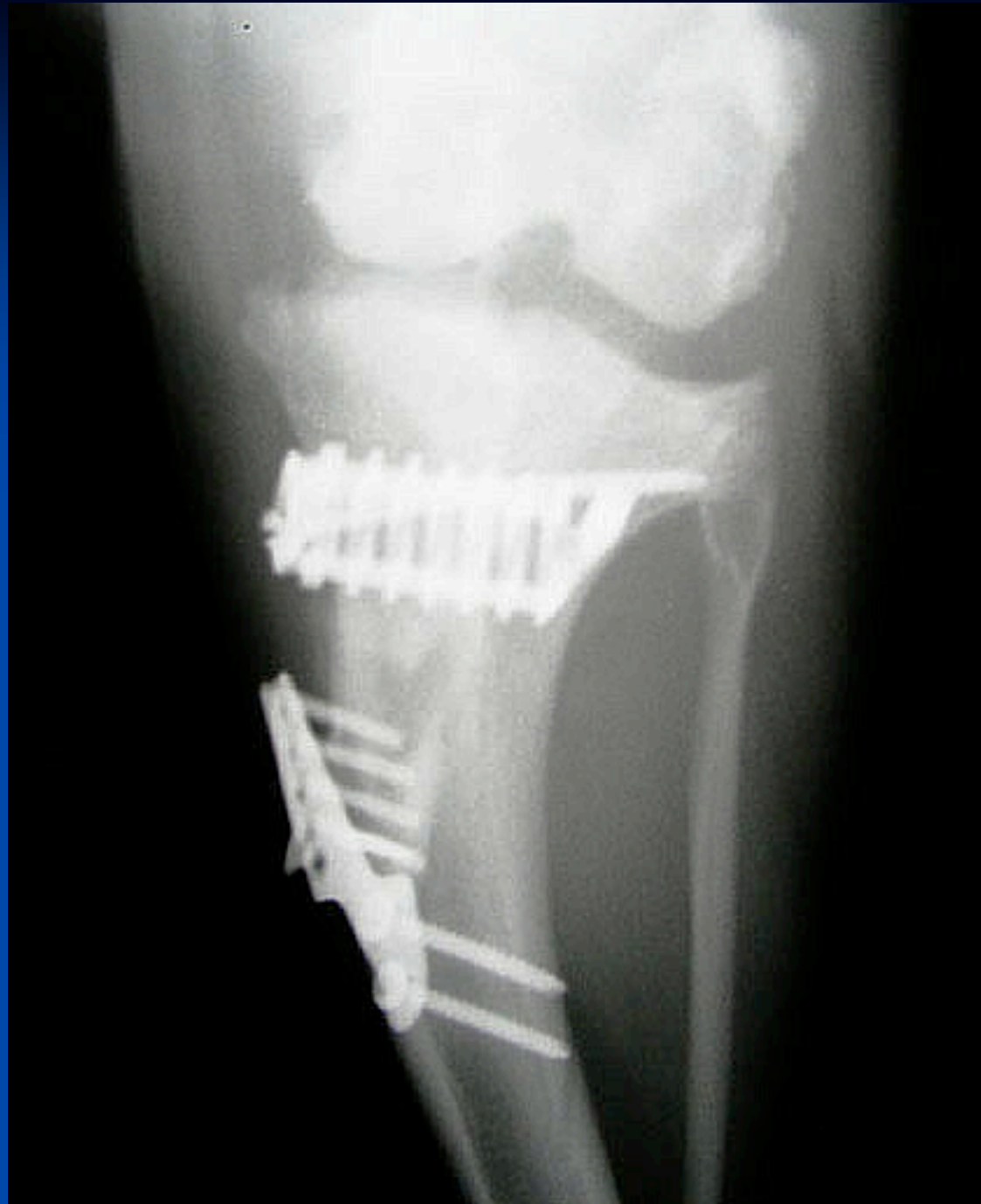
Post op



3 wk post
TTA -
fixation
failure!



3 wk
post
TTA



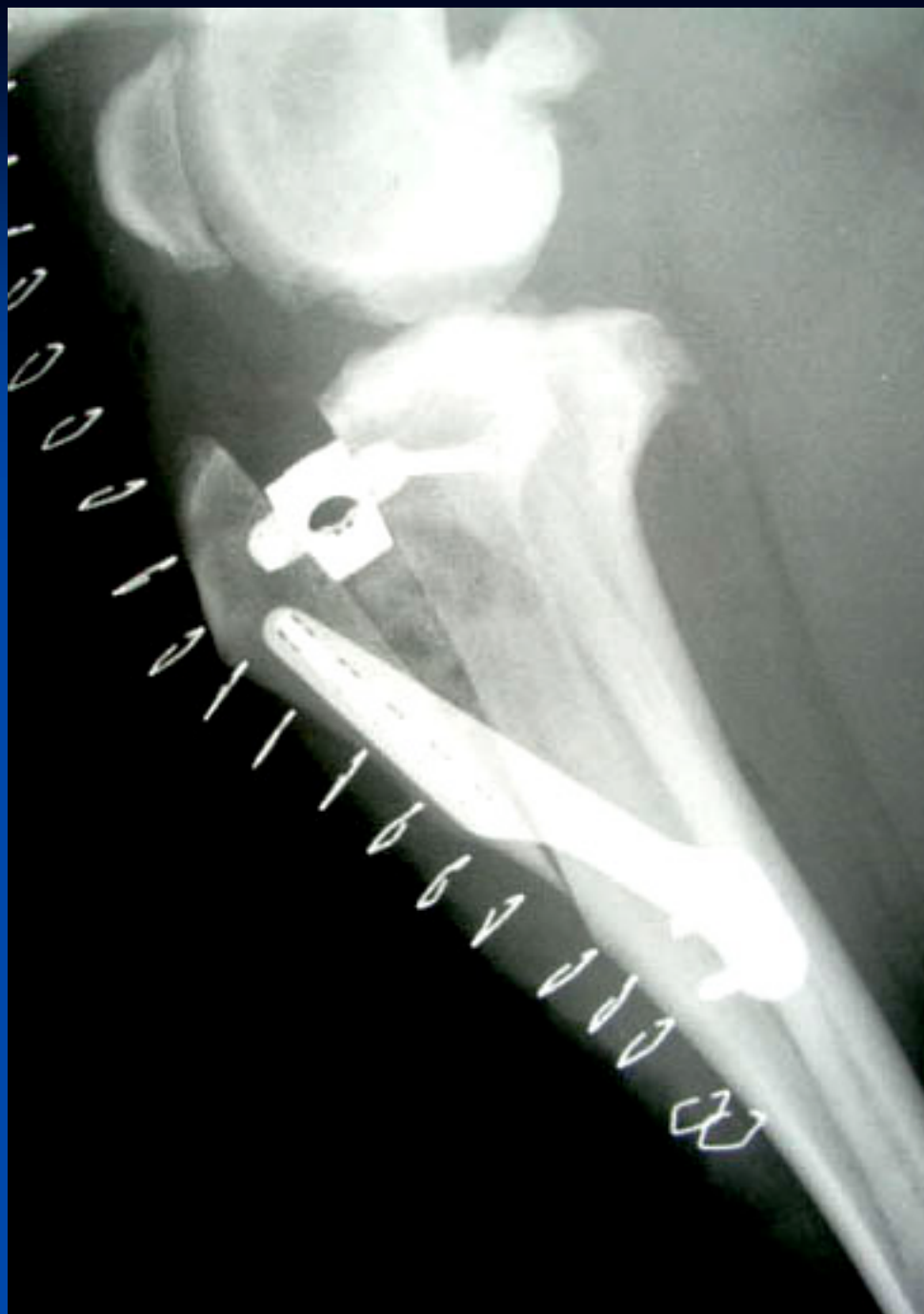
3 wk post TTA



Post revision



Post op



Questions for discussion

- What is the likely cause of the fixation failure in this case?
- What is the frequency of fixation failure and tibial tuberosity fracture in TTA?